

Tracking Portal and More – with PTV xServers

YellowFox GmbH

“We got to know and appreciate the advantages of PTV’s components: easy integration, extensive functionality around digital maps, stability and reliable support.”



Peter Stimpel, Head of Development, YellowFox GmbH

The challenge

YellowFox offers its customers tracking and telematics services that are available on an online platform. Therefore, reliable map and routing technology is of utmost importance. When looking for a provider, YellowFox had three major requirements:

- Extensive functionality: Current, detailed map data (Europe-wide), address geocoding, route planning, route tracking and tracing, geofencing.
- Self hosting: With the ASP map solution previously used, YellowFox had no influence on the availability of its services. That is why they started looking for a self hosting solution.

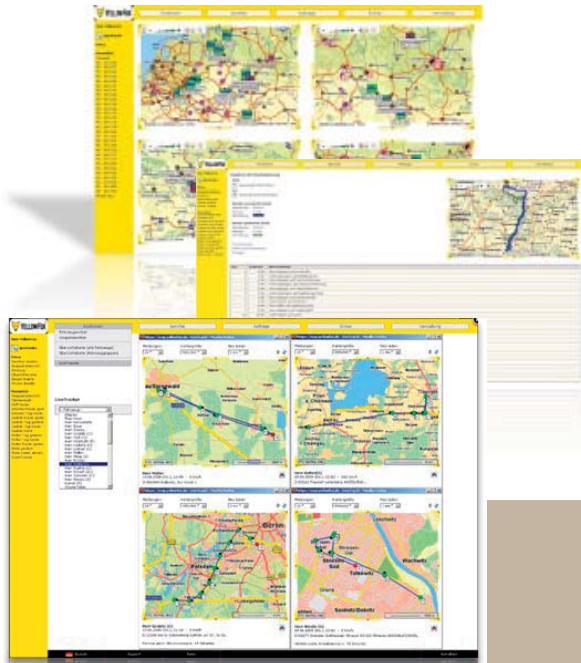
- Performance: The new technology should also beat the previously used ASP solution in terms of performance. All three requirements are aimed at enabling future growth.

The solution

YellowFox opted for the PTV xServers – individual components that each cover central functions. Standard interfaces allow for easy integration. YellowFox deploys the three xServers (xMap, xLocate, xRoute) with the following functions:

- PTV xMap Server: displays digital maps (for all of Europe); real-time vehicle positions (live tracker), geofencing, POIs, customer addresses, etc on the map. It further shows the routes taken (GPS traces).

- PTV xLocate Server: provides address geocoding (for all of Europe and down to house-number level), reverse geocoding and reports geofence crossings.
- PTV xRoute Server: calculates routes with several points en route, distances, journey time and costs and compares the routes calculated with the routes actually taken.



Some of the YellowFox services that are based on PTV xServers: route calculation, route comparison, geofencing and real-time tracking.

Customer: YellowFox GmbH, Kesselsdorf near Dresden, Germany. Started in 1999 with a portal for online vehicle tracking. Since then YellowFox has extended its range of applications broadly. Today it includes vehicle fleet management, scheduling, route optimisation, geofencing and much more. (www.yellowfox.de)

The result

Broad range of services

The broad range of functions provided by the xServer allows YellowFox to offer its 6,000 customers various map-based services:

- Map-supported scheduling
- Live tracker (real-time tracking)
- Route planning
- Road and route tracing
- Geofencing
- Stop points schema
- Position data table
- Distance queries

- Radius search

"The PTV components enable functions that simply make the YellowFox package attractive. In the future, we want to use additional functions, such as the AJAX maps", says Peter Stimpel.

High degree of availability

Peter Stimpel continues: "Self hosting is a big advantage compared to our earlier ASP solution. The xServers are stable. This allows us to guarantee our customers reliable services."

Easy integration, excellent support

The standard interfaces of the PTV xServers ensure smooth implementation. The modularity of the xServers reduced the integration costs: The xServers do not come in a complete package; YellowFox only had to license the three components they needed (xMap, xLocate, xRoute). The support provided by experts and the annual user meetings ensure a good cooperation. "PTV's excellent reputation in the logistics sector has proven to be true", summarises Peter Stimpel.

Traffic software
 (Logistics software
 Transport software

PTV Nederland BV
 Energieweg 1
 3542 DZ Utrecht, Nederland
www.ptvbenelux.com

tel.: +31 (0)346 581 600
 fax: +31 (0)346 581 616
info@ptv.nl

PTV België BVBA
 Albert Dehemlaan 31
 8900 Ieper, België
www.ptvbenelux.com

tel.: +32 (0)57 224 522
 fax: +32 (0)57 224 536
info@ptv.be

