

map&guide intranet

Business Route Planning for the Entire Organisation!

Networked use – for all employees

map&guide intranet - professional route planning and visualisation of process-relevant addresses and information for every workstation. Central data management in the company means that all users have complete, up-to-date information available to them at all times. Not only that, but map&guide intranet can be controlled directly from your company's business software, thus enhancing it.

It doesn't matter whether you're in transport and logistics, call centre operations, or some other industry, map&guide intranet is *the* specialist when it comes to calculating, planning and optimising routes and distances. Furthermore, company-specific addresses and additional information can be included directly on the map and made available to users. In addition to the comprehensive range of route-planning functions, the ability to visualise existing company data in particular makes it easier to perceive geographical relationships. This supports and secures the decision-making process, and in such a way represents real added value.

Minimum Installation Effort and Memory Requirements for Many Users

map&guide intranet ensures that every employee in a large work group has a professional route planner at their disposal. Equipped with all the relevant functions of a leading business route planner, map&guide intranet supports business processes throughout the company:

- Optimised route planning at every workstation with dynamic address connection to the central database
- Precise calculation of distances and costs, including toll calculation
- Little installation effort and no additional memory requirements for clients (HTML frontend)

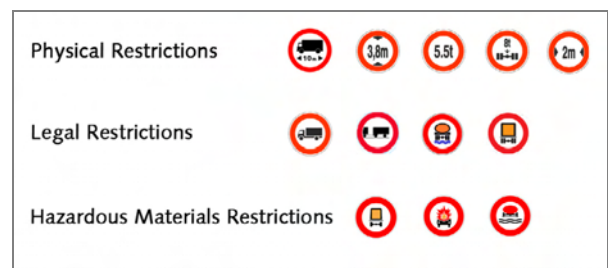
Highlights in Version 2008

Inserting Route Marker Points

This new function makes it even easier to select a route. A route marker point added to a list of stop-off points is not part of the route, but must be passed within a certain radius of it. An example: The driver of a vehicle wants to drive from Brighton to Oxford via London. To add London as a route marker point, right-click somewhere near London. map&guide intranet will then calculate your route via the motorway that passes London - and not treat London as part of the route or a via-point.

Data package for HGV and hazardous goods planning

In map&guide intranet 2008, all data for HGV and hazardous goods planning are based on the truck attributes of NAVTEQ Transport. Truck attributes which are described by NAVTEQ as "Physical Restrictions", such as height limits or permitted total weight are contained along with no through roads, time-related road restrictions and hazardous materials restrictions. The "warnings" contained in NAVTEQ Transport, such as steep downhill roads are added using the new autoupdate function wherever available and are displayed on the map and route list.



map&guide intranet 2008 – truck attributes (selection)

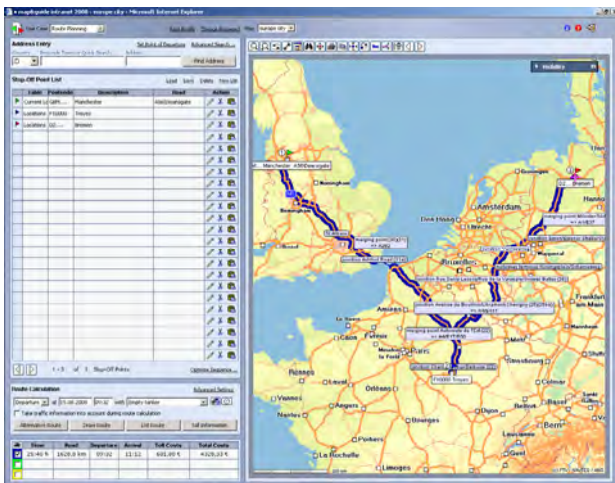


Coverage of NAVTEQ Transport (last amended: 04/2007)



Basic functions

- **Route planning throughout all of Europe**, and even door-to-door in many cities. Close to full coverage of the entire road networks in Belgium, Denmark, Germany, Great Britain, Luxembourg, The Netherlands, Sweden and Switzerland.
- map&guide intranet can be **implemented internationally** thanks to its multilingual user interface and simultaneous use of several map&guide maps. The following language versions are available: Danish, Dutch, English, French, German, Italian, Polish, Portuguese, Swedish and Spanish.



- Calculation of the **fastest, shortest or most cost-efficient route** taking various parameters into consideration (vehicle-specific properties, speed profiles, time slots, appointments, stay times, driving times and rest periods)
- **Data for HGV and hazardous goods transport** – based on truck attributes from NAVTEQ Transport – already included for many European countries
- **Realistic calculation of driving times and rest periods** whilst accounting for remaining driving times and remaining shift times
- **Sequence optimisation** (for up to 200 stop-off points) and **calculation of alternative routes** taking direct distance, road kilometres and time slots into consideration.
- **Integration of personal customer data and visualisation on the map&guide map**
- **Exact HGV toll calculation** for Germany, Austria, Switzerland, France and the Czech Republic, as well as average toll for many other European countries. Toll costs and special toll roads are listed separately.

- Individual countries **can be avoided during route planning**.
- Integration of **traffic information** from Germany, Austria, Great Britain, Belgium and the The Netherlands
- **Ferry ports** can be selected as points on route and included in the itinerary.
- **Points of interest (POI)** such as service stations, car parks, churches, monuments, train stations, airfields, toll terminals etc. make it easier to get your bearings and provide you with important on-the-spot local information.
- Print out your map&guide maps and detailed itineraries in the **desired format**, then bring them along with you to ensure you stay on the right track.
- **Individual point-to-point routes**, for visitors for example, can be sent by **e-mail**.
- Includes the desktop tool "**quick route**" for quickly calculating distances and toll.
- It is now possible for the administrator to **create statistics** and **monitor and control server activities** using a service.

Individual Configuration and Enhancement with Add-on Modules

Comprehensive settings and administration rights make it possible to configure workstations in line with individual user needs. Add-on modules enhance map&guide intranet's range of uses.

- Search for Next use case with ticket function, form editor and automated area planning especially for use in call centres
- Postcode areas add-on module for map display



Use case 1: Calculating Routes and Costs

Many companies use the distances calculated by map&guide as their billing basis. This means that quotations, cost estimates and audits have a solid foundation and are transparent for all partners. Calculations are based on vehicle-specific properties and current map material, the result of over ten years' map&guide know-how.

1. Create a central cost profile

Under "Settings" enter your vehicle costs: fixed costs, variable costs etc.

List of Individual Costs

Standing Costs | Variable Costs | Fixed Costs / Year

Purchase Leasing

	Chassis	Body		
Purchase Cost	10000	10000	Mileage / Year (in kkm)	0
Residual Value	0	0	Days / Year	0
Service Life in Years	0,00	0,00	Hours / Day	0
Leasing Rate / Year	0	0	Calculated Interest Rate in %	0,00
Time Depreciation in %	0,00	0,00		

Results

Route Costs / km	3,0000	Time Costs / hrs	0,0000
Fixed Costs / Journey	100	Total Costs / Year	0,00

Buttons: Print..., OK, Cancel, Help

Clear cost profiles

2. Plan and cost your routes

Now you can plan your routes (and alternative routes) and have the associated transport costs calculated at the same time.

Toll details for default route - Microsoft Internet Explorer

Detailed information on Toll Calculation
Tolls are calculated according to average values. Click the links in the Comments column to get further information.

map&guide intranet 2008 toll calculation

Toll roads per country					
Country	Comment	Toll roads	Toll	Special toll	Total toll
Great Britain	122		0,00 €	484,70 €	484,70 €
France		457,3 km	71,79 €	0,00 €	71,79 €
Belgium	11		0,00 €	0,00 €	0,00 €
The Netherlands	11		0,00 €	0,00 €	0,00 €
Germany		292,2 km	45,31 €	0,00 €	45,31 €

Special toll roads per country		
Country	Description	Special toll
Great Britain	116	80,54 €
Great Britain	Dartford River Crossing	4,16 €
Great Britain	Eurotunnel	400,00 €

Total costs

Toll	117,10 €
+ Special toll	484,70 €
= Toll Costs	601,80 €
+ Vehicle Costs	3726,53 €
= Total Costs	4328,33 €

Via Points in Germany

Point of departure	Route 1	Road
Stralsund, Bundesgrenze		A40

Buttons: Print, Toll Collect Data Entry, Cancel

Toll cost calculation

3. Create quotations, write invoices and check transport costs

You can use the distances and associated costs calculated by map&guide as the basis for your quotations and invoices. You can therefore verify whether your flat-rate driving costs correspond to your actual costs.



Use case 2: Travel and Route Planning

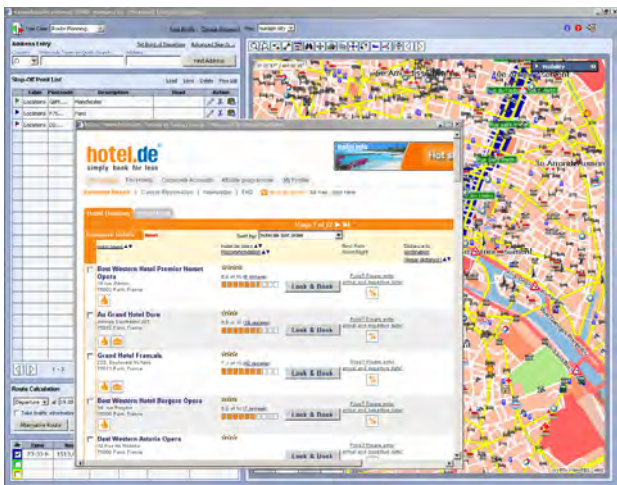
One of your employees needs to travel to Manchester at short notice. How can he calculate the best route and find a nearby hotel? Not a problem for map&guide intranet: The software provides you with a detailed itinerary and map images drawn to any desired scale. 50,000 hotels from various price categories in Germany, Switzerland, Austria, France, Spain and Great Britain can be booked online. It's faster and often cheaper than going to a travel agent.

Enter your start and destination addresses and any other points en route required.

Our tip: Your existing address databases can be dynamically integrated into map&guide intranet at any time. This means you always have the most up-to-date, company-wide information at your fingertips.

Do you need a nearby hotel room?

Simply search for a hotel near your appointment location. map&guide intranet provides you with an up-to-date list of hotels from the Falk hotel guide which you can directly book online.



map&guide intranet calculates and, if desired, optimises your route so that you can reach your appointments and meetings as quickly as possible.

Use case 3: Search for Next

A fast response time is the linchpin of customer service and deployment management. The Search for Next use case accurately pinpoints an address and delivers the required information for the location within seconds.

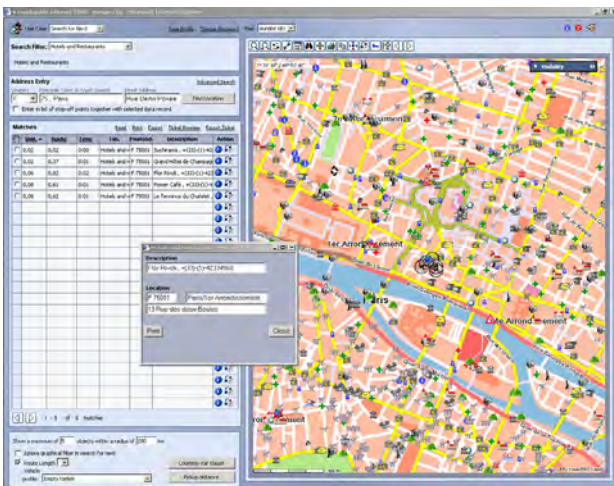
- **Dynamic connection to company address databases:** SQL, Access and Oracle databases, as well as Excel tables can all be directly connected to map&guide and the addresses shown on the map&guide map with additional information.
- **Automated geographical area planning** based on your address data (according to direct distance, route distance, time or postcodes). The radius search or search for next includes and displays all areas.
- **Automated interface for data transfer** to ERP or CRM and Call Management systems.
- **Form Editor** for assigning jobs.
- The search criteria for an appropriate **service provider** can be saved as a **search filter**.
- The software finds all relevant addresses within a freely definable radius **around a certain address**.
- **Additional Points of Interest (POI)** such as German motorway kilometres, petrol stations, car parks, churches, monuments, train stations, toll terminals etc. help you get your bearings and provide you with important on-the-spot local information
- **Detailed address information** on the map is just a mouse click away.
- **Postcode areas:** Existing areas based on postcodes can now be taken into consideration, e.g., in the Search for Next (optionally available).



Search for next in the call center

Whenever you need to provide fast, reliable information, it is vital that your software works correctly. Here map&guide intranet can assist you: the "Search for Next" use case allows you to pinpoint any location.

For example, you're looking for a local supplier of building material. In this case you simply need to enter your current location. Within just a few seconds, you will be provided with the desired address.



1. Enter your address.

map&guide call center will identify the nearest supplier for you immediately. The information is clearly displayed on the map&guide map and as text in a list.

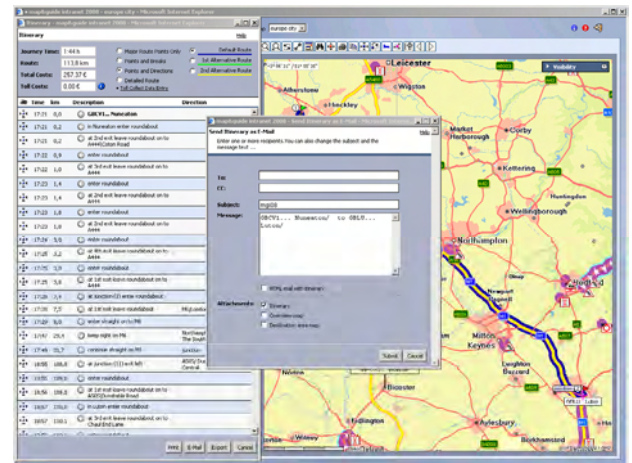
Tip: If your contract partner is responsible for a specific area, the software can take this into account when performing the search. You can easily define the areas yourself with map&guide call center, based on route distance, direct distance, time or postcode areas.

Tip: You can search for the nearest supplier based on road distance or direct distance. It is often better to base your search for the nearest supplier on road distance because a direct distance search does not account for any geographical obstacles such as rivers and valleys. Therefore, it is often the case that the direct distance (as the crow flies) appears to be shorter but is significantly different to the actual road distance.

2. Furthermore, detailed information on the addresses found by the search is available in map&guide intranet.

The employee can therefore provide the caller with the opening times and address of the dealer. Tip: Existing address databases can be incorporated into map&guide intranet at any time. It is also possible to take sales areas into account when performing the search.

3. You can also e-mail the customer a point-to-point route description that explains how to reach the nearest specialist dealer from the customer's current location.



In addition, the "Search for Next" use case offers functions specific to the area of car insurance claims: pinpointing a location using an address, distances on motorways, car parks and POI data. By means of the "Direct Distance" function, you can calculate/check the distance between the incident location and the customer's address or service garage.

If the vehicle has to be towed, you can use the software to calculate the "pick-up distance" (i.e. the distance between the incident location and the service garage).



Map material

From our 15 years of experience we know that top-of-the-range map-based software can only be developed if the map quality itself is first class.

Therefore we always make sure that the high-quality map data that we receive from the European market leader NAVTEQ is further refined in our own map departments. With every new map release, you receive improved and updated map material - every release contains on average 20% more map data than the previous version.


New map material included in map&guide professional Version 2008:

- New map packages
- Available truck data
- New map detail levels


Map detail levels:

 Detailed Network

The best available road network (incl. the complete road network NAVTEQ and other providers). Detailed Network is for example included in City level maps.

 Major Roads Network

Interurban network with the major main roads, all cities and locations (location points) in Europe.

 Transit Network

Rough interurban network of major locations and cities in Europe.

Please note that toll calculation is only supported with Detailed Network maps. For route calculation with Transit or the Major Roads Network, the use of truck data and ferry connections is limited.

Map packages

DACH City map

- D, A, CH, Liechtenstein with City level (Detailed Network)
- Plus European interurban network for all countries without City level (Transit Network)



DACH City map:
Detailed Network (red)
Transit Network (light grey)

Europe Map

- All of Europe on one map. Includes cities with major roads down to main road level. (Major Roads Network)



Europe Map: Major Roads Network (dark grey)



Central Europe City map

- D, A, CH, France, Belgium, The Netherlands, Luxembourg, Italy, Denmark, Liechtenstein, Czech Republic and Poland with City level (Detailed Network)
- Plus Major Roads Network (interurban network with the most important main roads and all cities and locations (points) in Europe)



Central Europe City Map:
Detailed Network (red)
Major Roads Network (dark grey)

Europe City map

- Austria, Benelux, Czech Republic, France, Germany, Great Britain, Ireland, Italy, Poland, Portugal, Scandinavia, Spain, Switzerland - including city maps (if available) (Detailed Network)
- Plus Major Roads Network (interurban network with the most important main roads and all cities and locations (points) in Europe)



Europe City map:
Detailed Network (red)
Major Roads Network (dark grey)

Additional map material available

Besides our standard map packages, we offer additional map packages with detailed city maps in order to provide you with the most efficient map basis to meet your requirements.

- Benelux City
- France City
- Great Britain and Ireland City
- Italy City
- Poland City
- Scandinavia City
- Spain and Portugal City
- USA City: USA with detailed town maps.
- World: A basic but wide-ranging road network that covers the entire world. This map is available on request.

Additional maps are available upon request.

Points of Interest (POI)

Over 500,000 POIs throughout Europe simplify navigation further. Petrol and service stations, multi-storey car parks, ferry landing stages, exhibition centres, industrial parks and airfields are all shown on the map. Varta Hotels, tourist sights, shopping centres, lakes, watercourses and woods are also included.

System requirements

Network

At least a 10 MB network connection

Application Server

- Operating system: Microsoft® Windows® 2003, XP, 2000, Vista

We recommend you use a server operating system.

- Computer types: IBM-AT or compatible systems
- Processors: Current Pentium IV processors, min. 1,3 GHz (Note: Multicore CPUs are not explicitly supported)
- Memory: The amount of RAM required depends on how map&guide iNETServer is operated



Note: The standard product "map&guide" cannot be installed on the application server! If map&guide is already installed, you must firstly uninstall it and then restart the computer before beginning the installation of map&guide intranet.

- Hard disk space: Minimum 20 GB free
- Video adapter: Min. VGA (800*600), 16 million colours
- Drives: DVD-ROM drive
- Other: Internet access for use of traffic information

Webserver

- Processors: Pentium IV
- Memory: minimum 512 MB
- Hard disk space: Minimum 1 GB free
- Software: Preinstalled Internet Information Server versions
 - IIS 5.0 - Windows 2000
 - IIS 5.1 - Windows XP.
 - IIS 6.0 - Windows Server 2003
 - IIS 7.0 Windows Vista (limited - as there is not setup support i.e. manual configuration is required)

No other web servers are supported.

Miscellaneous

- The IIS must be running when web front end is set up.
- The ASP service must be installed and activated (this is normally the case when the IIS is installed).
- The default web site, that is the standard web site of the Internet Information Server, must be available and started on the web server.
- The user who is carrying out installation must have administrator rights.

Clients

- Operating system: The web front end of map&guide intranet is supported by:
 - Windows 2003
 - Windows XP
 - Windows 2000
- Browser: Internet Explorer from version 6.0; Mozilla and Mozilla Firefox from version 2.0

On the client side, the application uses HTML, DHTML, StyleSheets, JavaScript and cookies. JavaScript and StyleSheet support must always be activated, otherwise the Client will not function correctly. If JavaScript is not activated then logging on to the server is not possible. Cookies are used to store the user's logon name and preferred language. If cookies are deactivated the functionality of the web front end will not be impaired. However the language and user name settings will not be saved for the next login.

Computer types

The type of computer is not important as map&guide intranet is accessed via a browser.

Processor

Pentium III

Memory

Minimum 512 MB

Video adapter

800x600, VGA, 16 million colours.

Further information

We would be delighted to answer your questions:

Tel. +31 (0)346 581 600

E-Mail: info@ptvbenelux.com

You can also visit our website for more information:

www.ptvbenelux.com

map&guide is a PTV AG brand.